

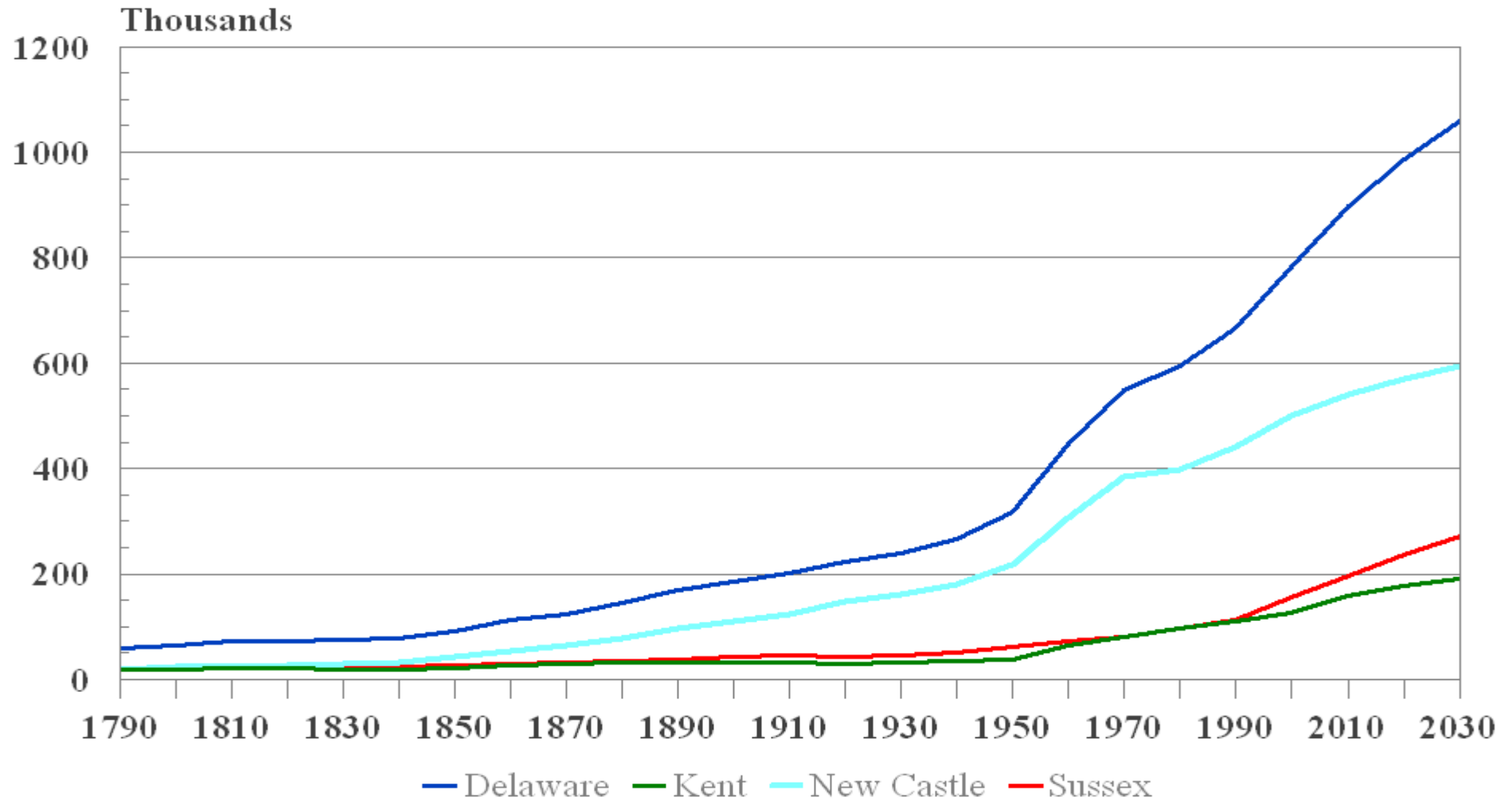
Delaware Health Care Commission
February 5, 2009

Delawareans Without Health Insurance 2008

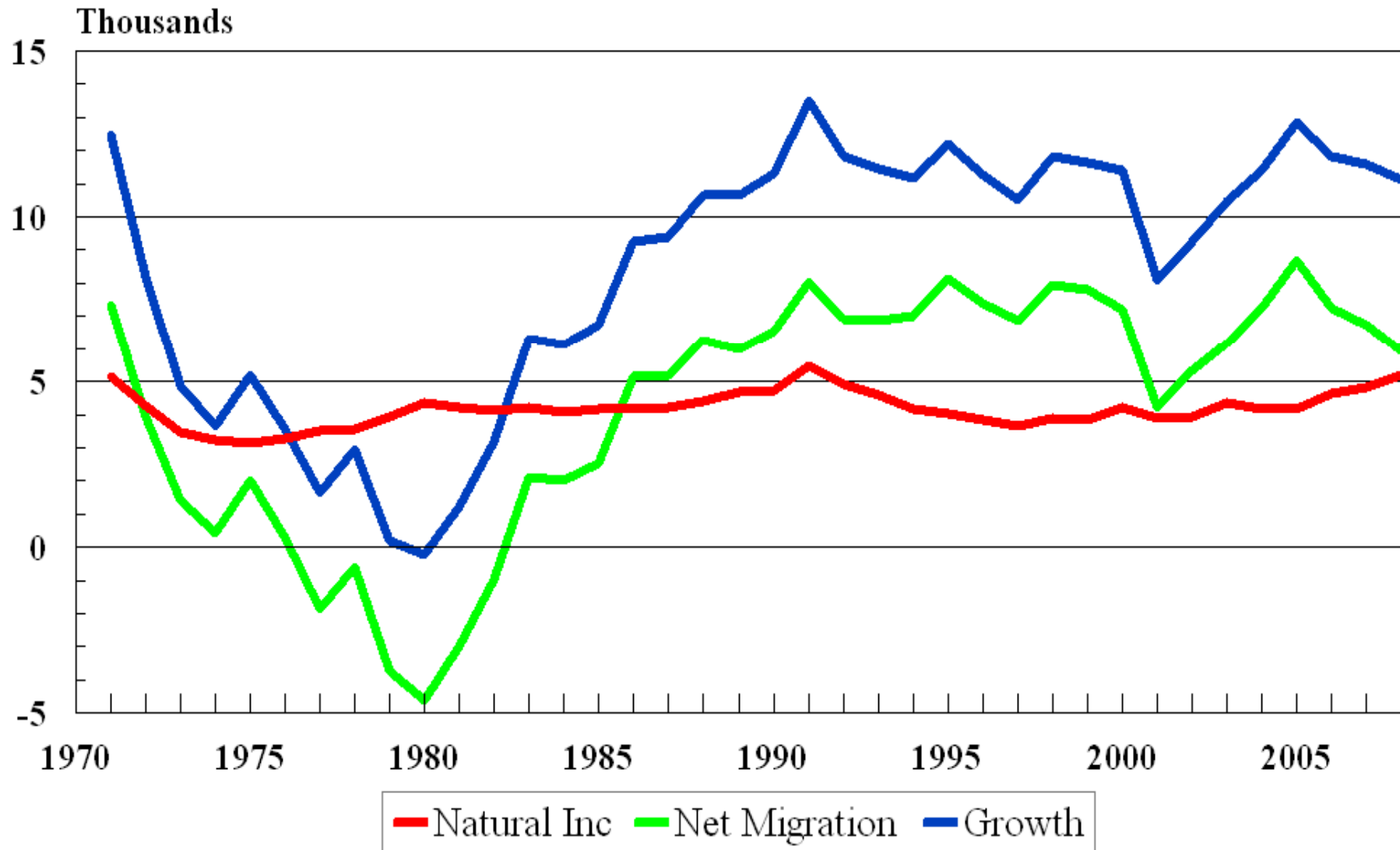
presented by

Ed Ratledge
Center for Applied Demography & Survey Research
University of Delaware

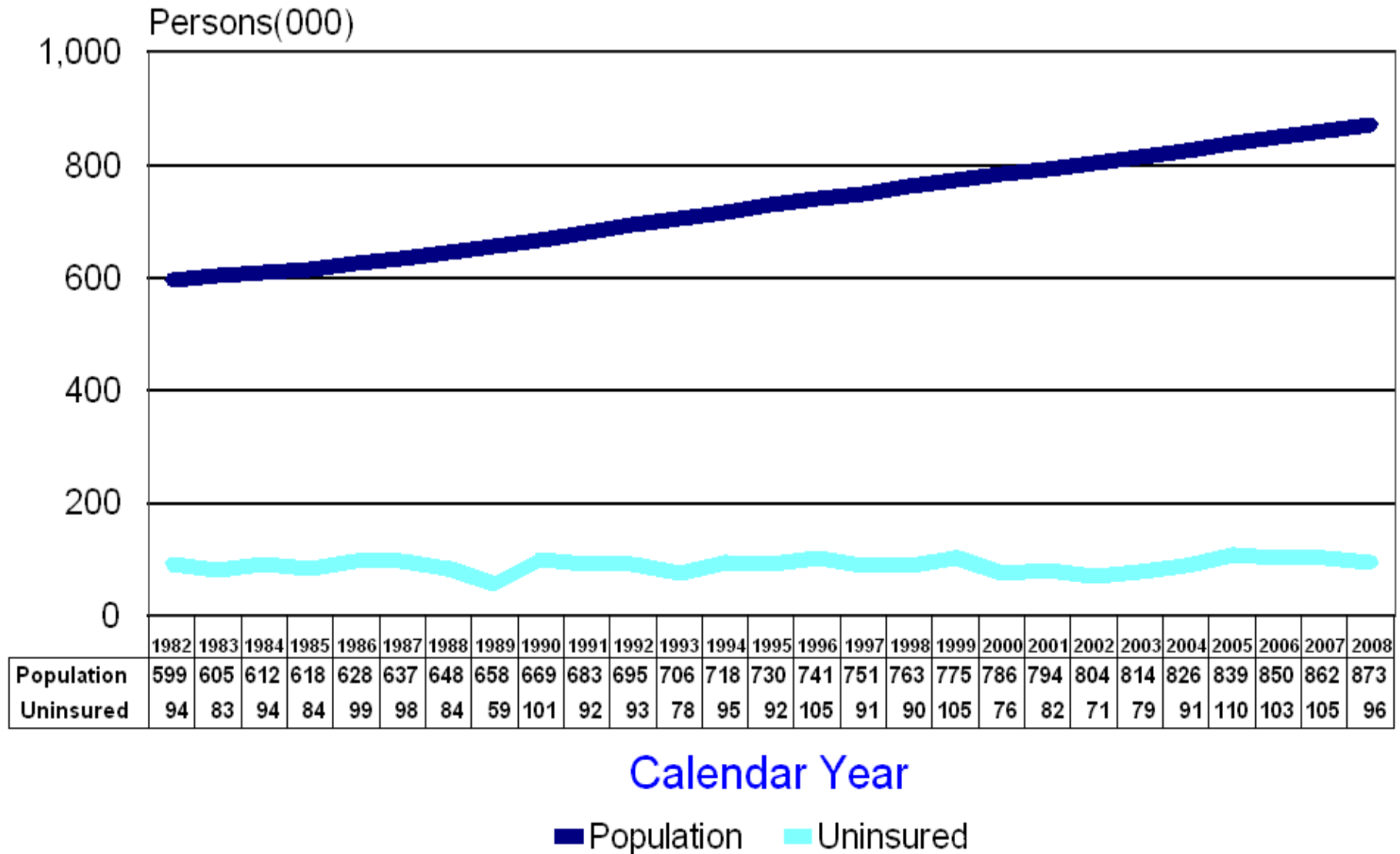
Population Growth Delaware 1790-2030



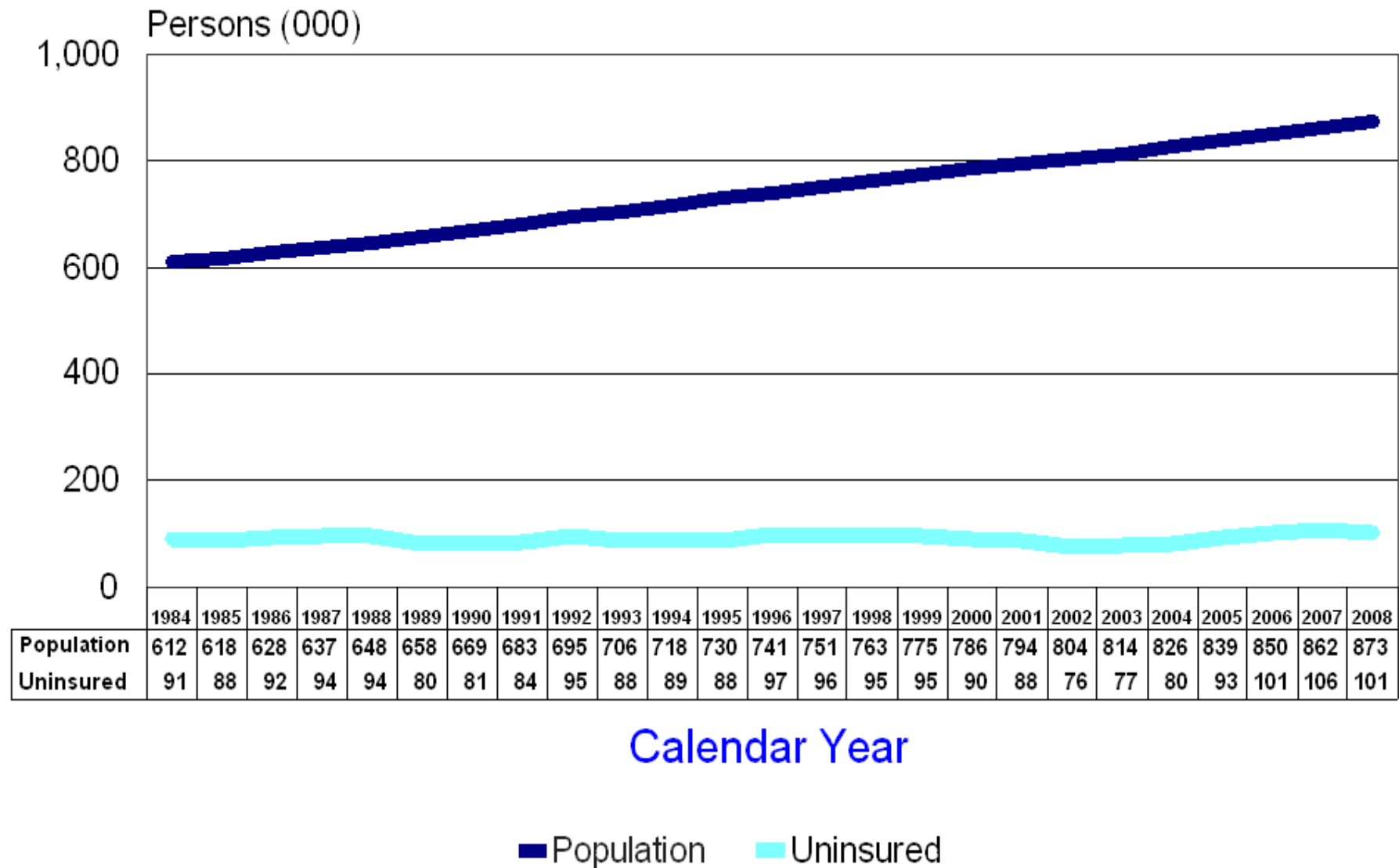
Sources of Population Growth Delaware 1970-2008



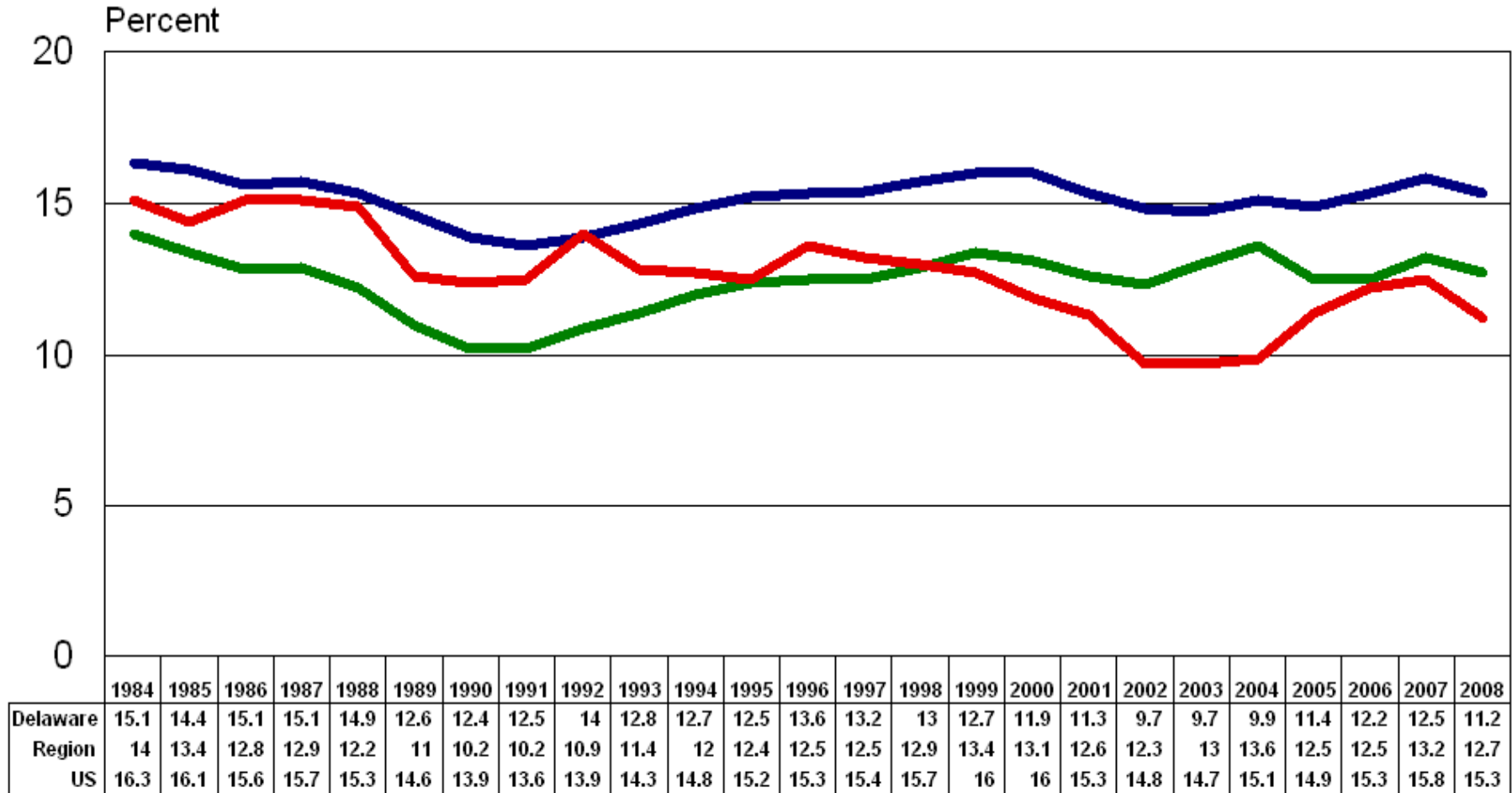
Persons Without Health Insurance Delaware 1982-2008



Persons Without Health Insurance Delaware (3-year Moving Average)



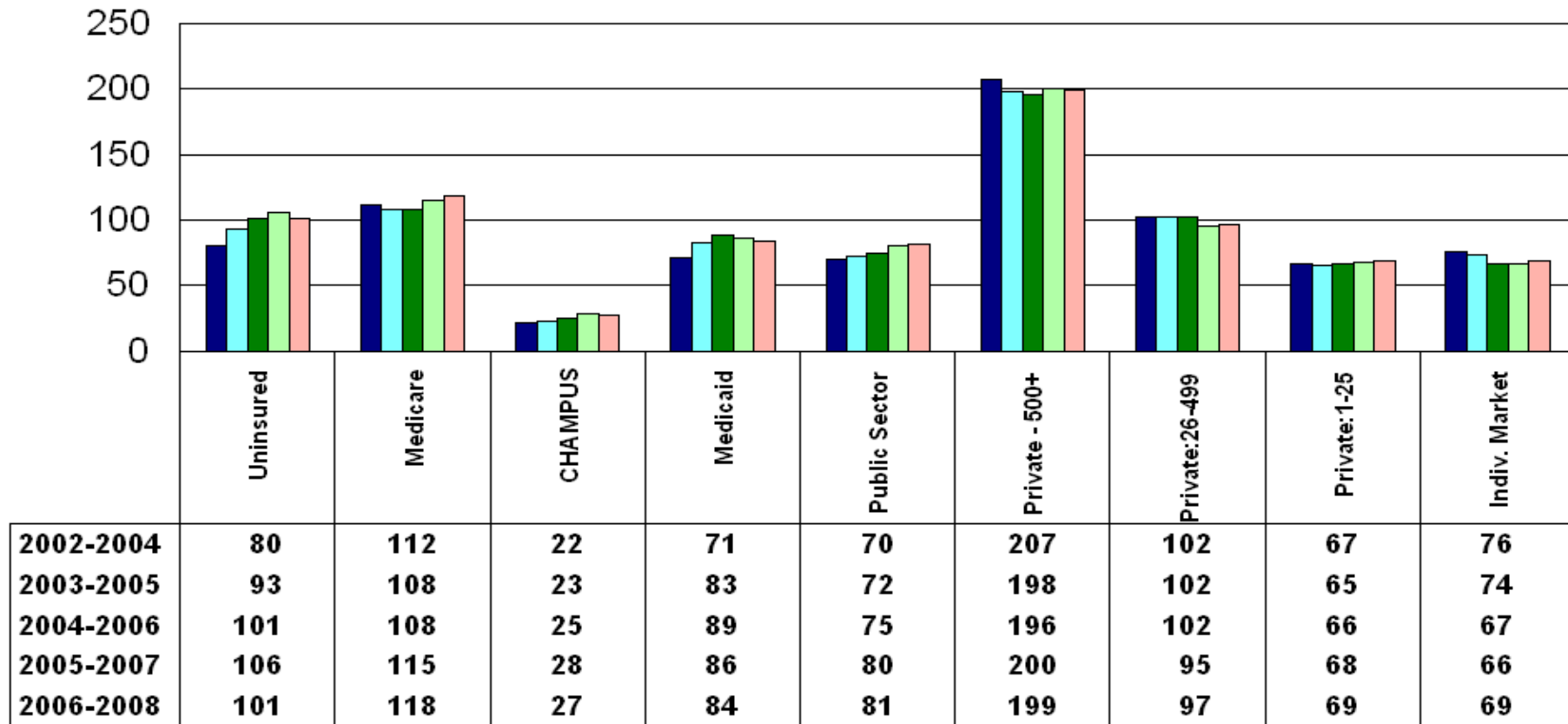
Persons Without Health Insurance by Area



Area

— Delaware — Region — US

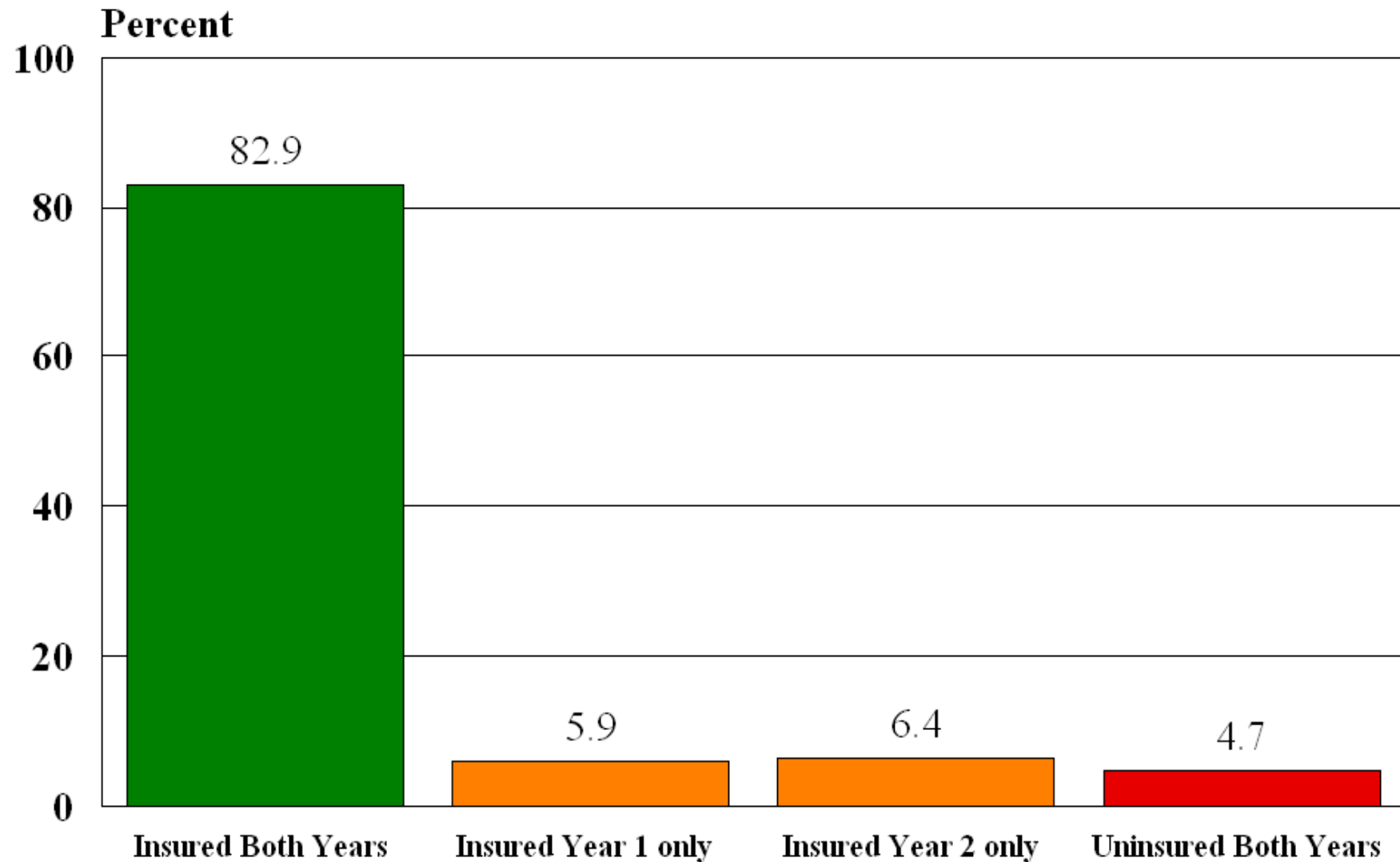
Number of Persons by Source of Insurance



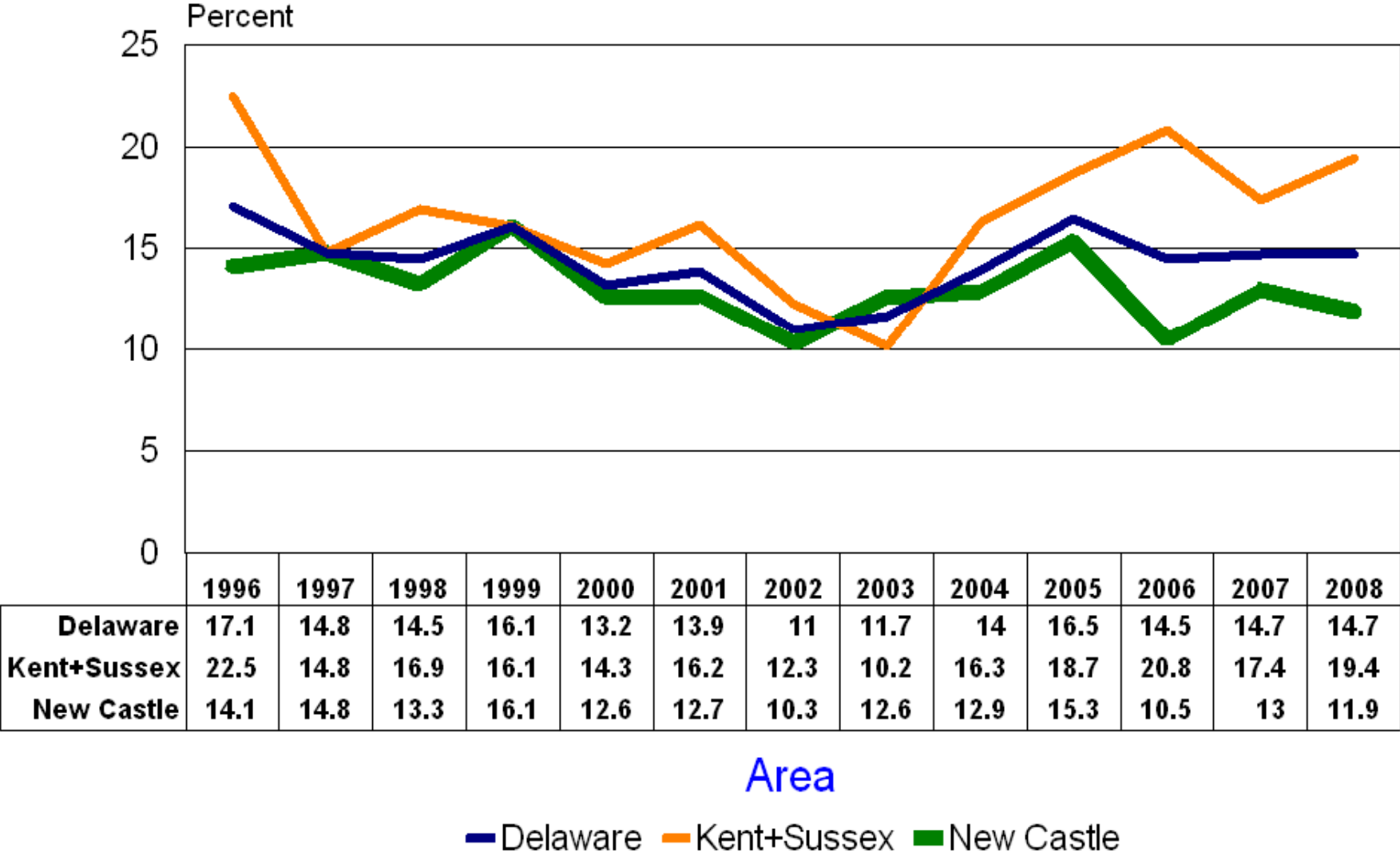
Year

■ 2002-2004
 ■ 2003-2005
 ■ 2004-2006
 ■ 2005-2007
 ■ 2006-2008

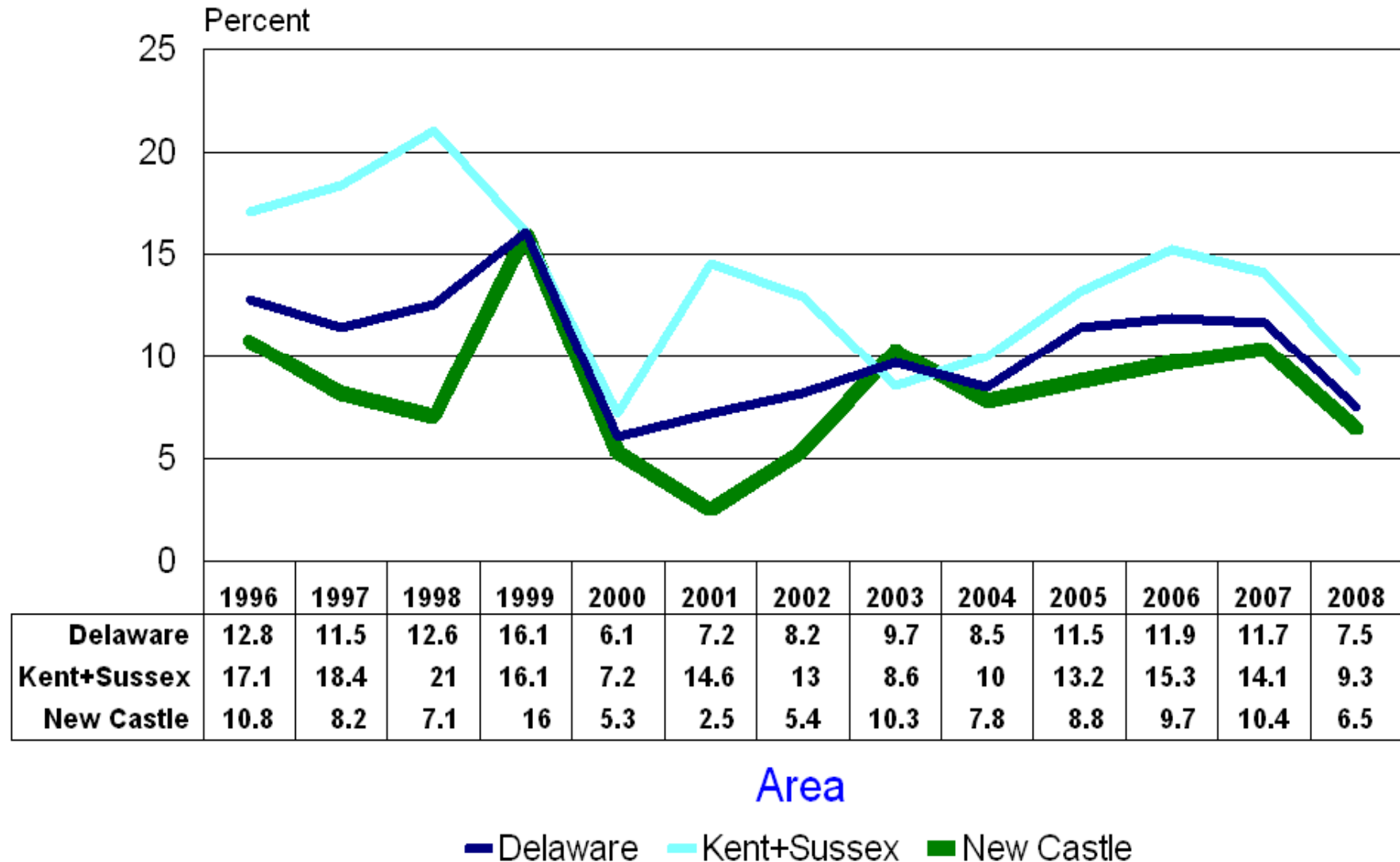
Health Insurance Status Matched Samples Over Two Years



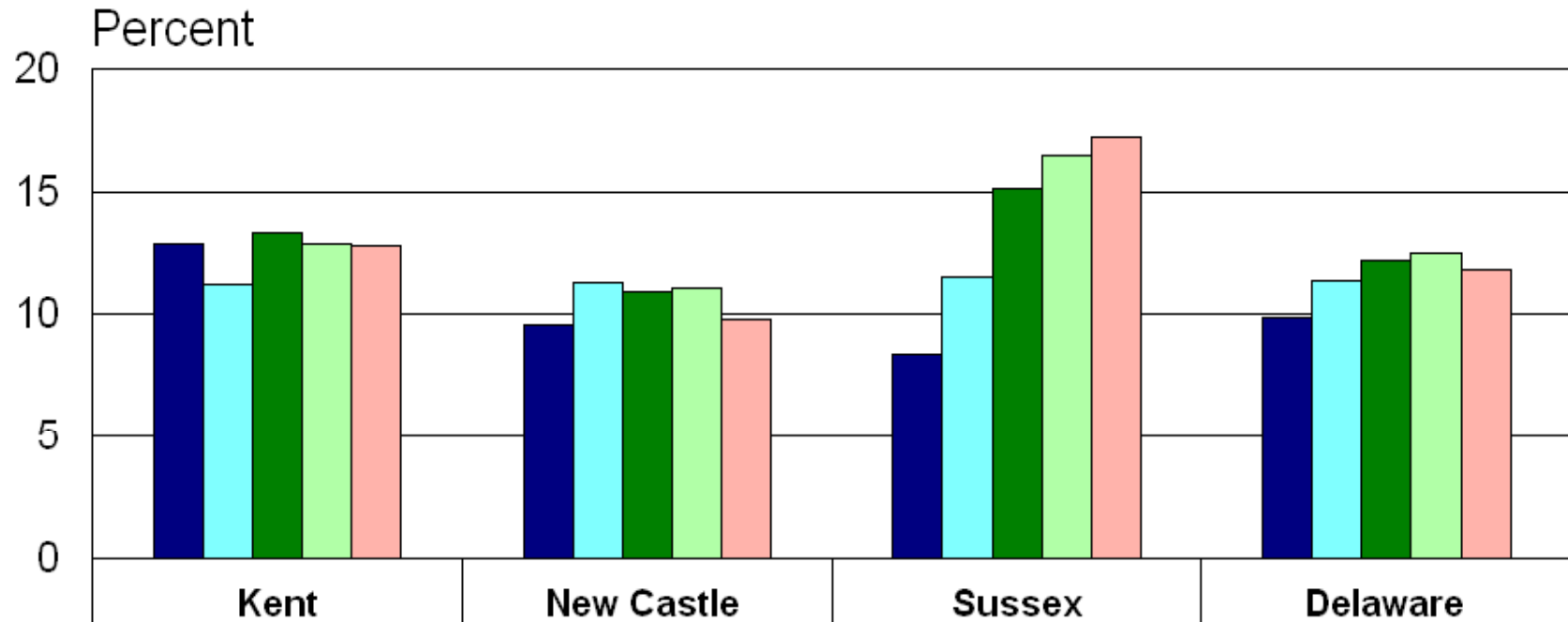
Percent 18-64 Without Health Insurance by Area



Persons 0-17 Without Health Insurance by Area



Percent Without Health Insurance by County

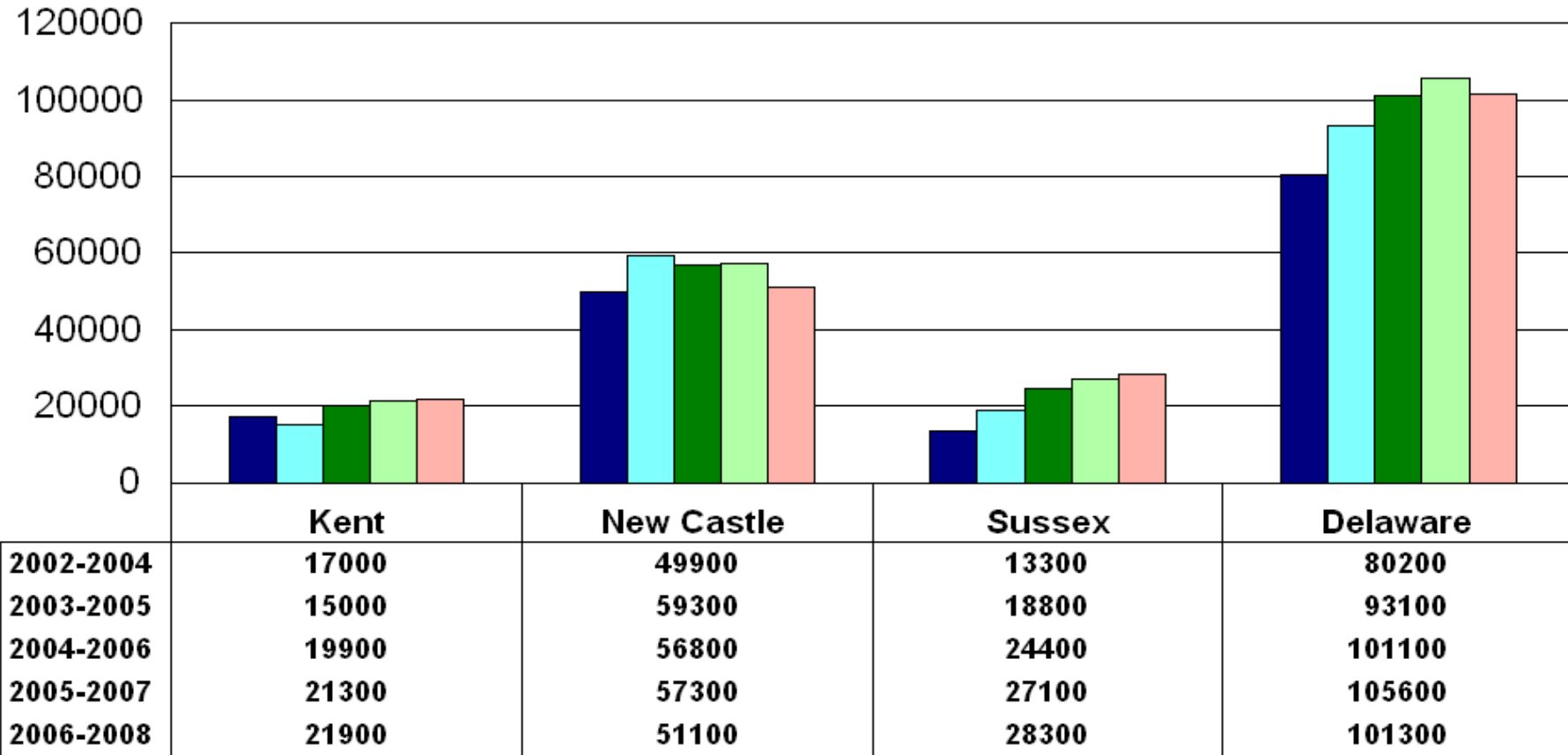


	Kent	New Castle	Sussex	Delaware
2002-2004	12.9	9.6	8.4	9.9
2003-2005	11.2	11.3	11.5	11.4
2004-2006	13.3	10.9	15.1	12.2
2005-2007	12.9	11.1	16.5	12.5
2006-2008	12.8	9.8	17.2	11.8

Year

■ 2002-2004
 ■ 2003-2005
 ■ 2004-2006
 ■ 2005-2007
 ■ 2006-2008

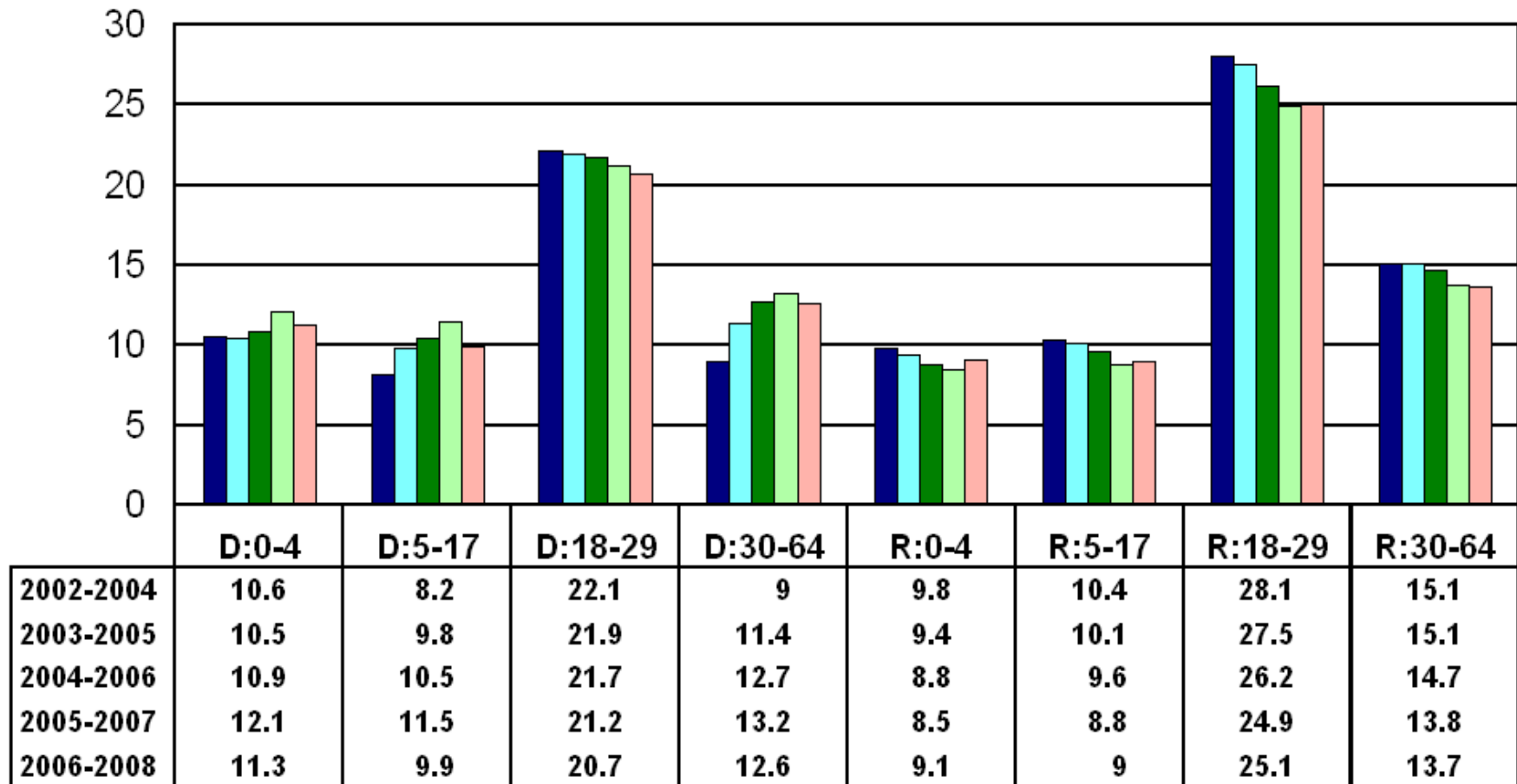
Persons Without Health Insurance by County



Year

■ 2002-2004
 ■ 2003-2005
 ■ 2004-2006
 ■ 2005-2007
 ■ 2006-2008

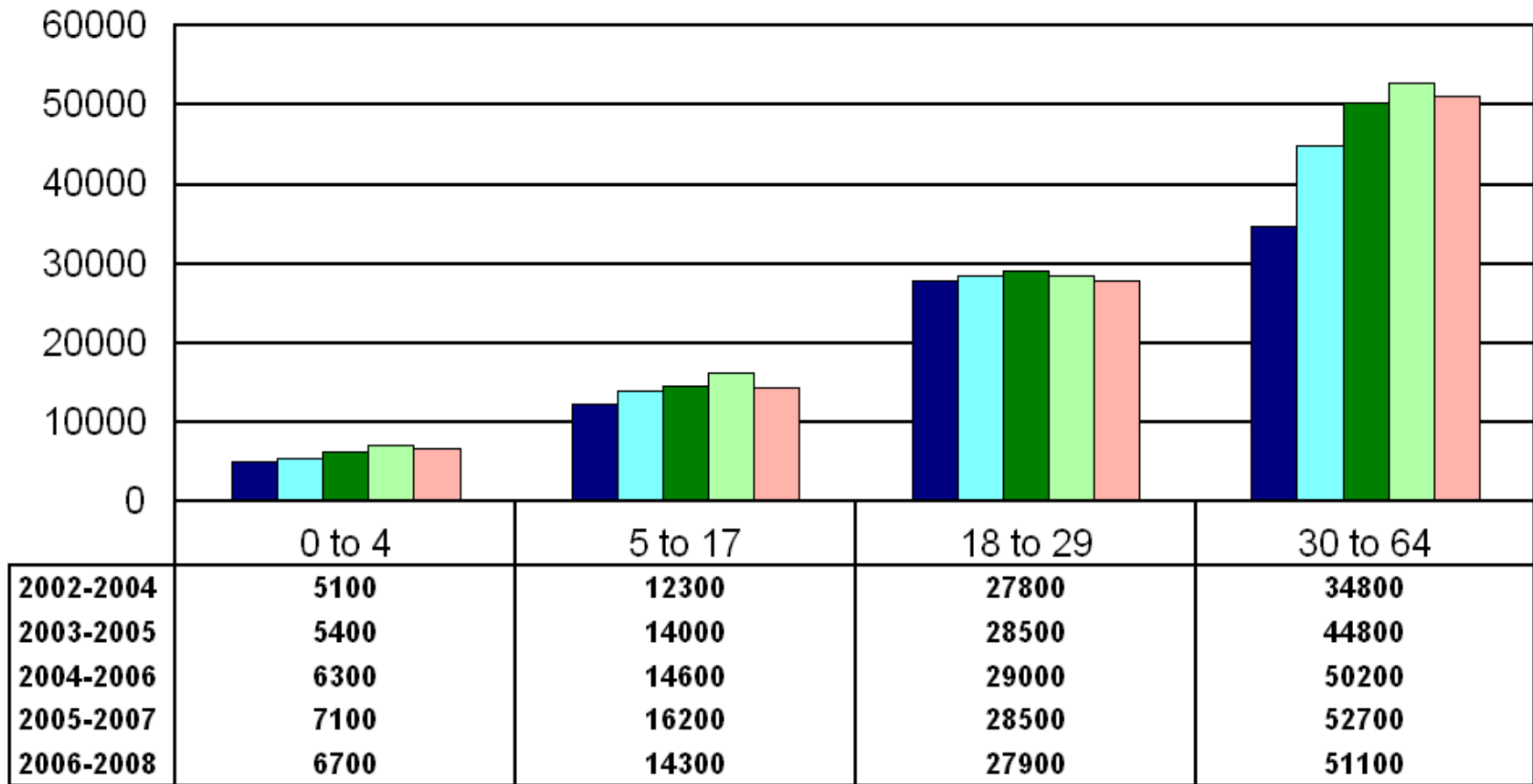
Percent Without Health Insurance by Age Group and Area



Age Group by Area

■ 2002-2004
 ■ 2003-2005
 ■ 2004-2006
 ■ 2005-2007
 ■ 2006-2008

Persons Without Health Insurance by Age Group



Age Group

■ 2002-2004
 ■ 2003-2005
 ■ 2004-2006
 ■ 2005-2007
 ■ 2006-2008

Persons by Poverty Status, Health Insurance Status and Age

Distribution of Persons by Poverty Status by Age and Health Insurance Status					
Poverty	0-18 All	0-18 No HI	19+	19+ No HI	
Not Measured	2236	740	0	0	
under 0.50	12855	2372	20998	6838	
0.50 to 0.74	6522	1211	12206	2992	
0.75 to 0.99	8172	1679	18413	4719	
1.00 to 1.24	8815	1217	17719	4389	
1.25 to 1.49	10895	2129	24094	5596	
1.50 to 1.74	11549	1626	24965	4209	
1.75 to 1.99	11805	2493	25667	6008	
2.00 to 2.49	21380	2521	54053	8723	
2.50 to 2.99	19656	1684	59130	9743	
3.00 to 3.49	18140	1052	52274	6002	
3.50 to 3.99	14633	1795	49339	4876	
4.00 to 4.49	9771	920	35042	2133	
4.50 to 4.99	11117	484	37421	2469	
5.00 & over	48426	973	208892	9679	
Total	215973	22896	640215	78377	
Source: Center for Applied Demography & Survey Research					
University of Delaware					
Current Population Survey 2006-2008					

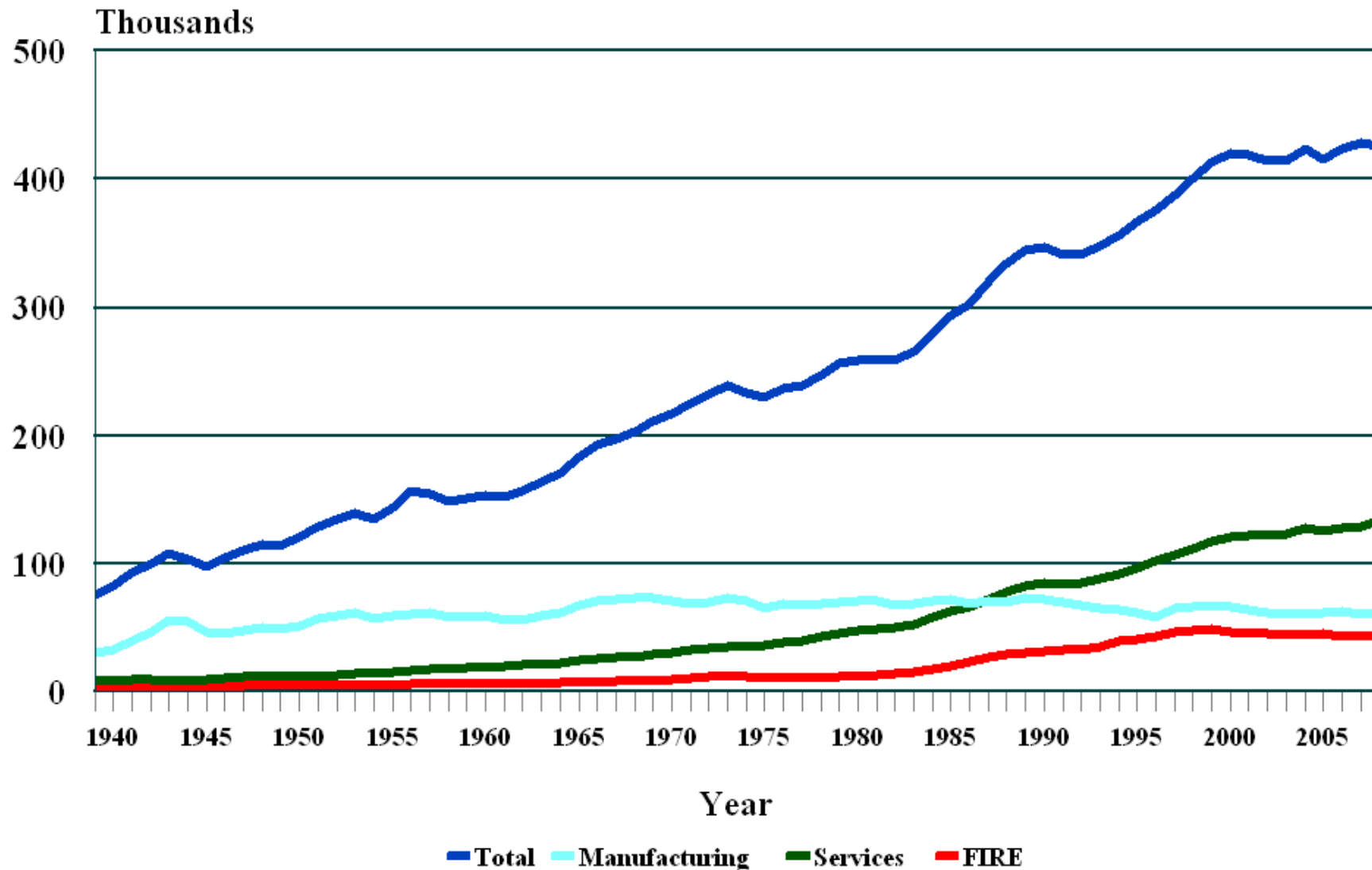
Who Are the 101,000 Uninsured

- 23% are under the age of 19
- 54% are male
- 69% are white
- 22% are Hispanic
- 59% own or are buying their home
- 21% live alone
- 80% are above the poverty line
- 34% with household income over \$50,000
- 56% are working adults
- 9% are self-employed
- 21% are non-citizens

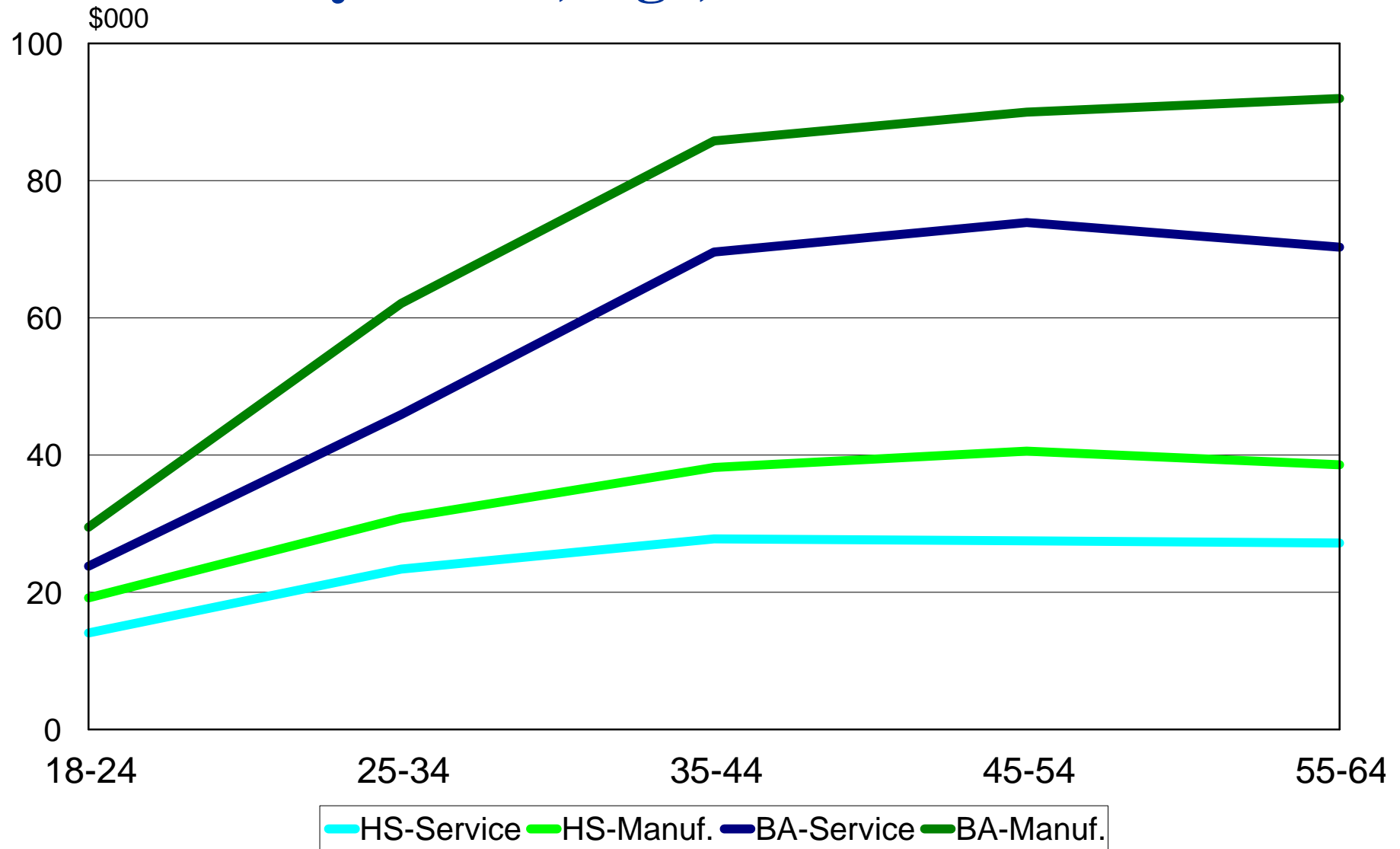
Program Eligibility for the Uninsured

Characteristics of the Uninsured and Program Eligibility 2006-2008						
Characteristics	Estimate	Medicaid	CHIP	Employer	Employer+Govt.	Unknown
0-18, Foster Child	740	X				
0-18, 0-100% poverty	5263	X				
0-18, 100-200% poverty	7465		X			
0-18, 200%+ poverty	9429					X
19-34,0-100% poverty, not full-time	4551	X				
19-34,0-100% poverty, works full-time	2729	X				
19-34,100-200% poverty, not full-time	4782					X
19-34,100-200%+ poverty, works full-time	5780				X	
19-34,200%+ poverty, not full-time	8462					X
19-34,200%+ poverty, works full-time	10146			X		
35-49,0-100% poverty, not full-time	2528	X				
35-49,0-100% poverty, works full-time	1561	X				
35-49,100-200% poverty, not full-time	2694					X
35-49,100-200% poverty, works full-time	3672				X	
35-49, 200%+ poverty, not full-time	4936					X
35-49, 200%+ poverty, works full-time	9478			X		
50-64,0-100% poverty, not full-time	2439	X				
50-64,0-100% poverty, works full-time	486	X				
50-64,100-200% poverty, not full-time	1724					X
50-64,100-200% poverty, works full-time	1399				X	
50-64,200%+ poverty, not full-time	4813					X
50-64, 200%+ poverty, works full-time	4904			X		
Total	99981	20298	7465	24528	10851	36839
	100.0%	20.3%	7.5%	24.5%	10.9%	36.8%
65+ uninsured	1291					
All uninsured	101272					

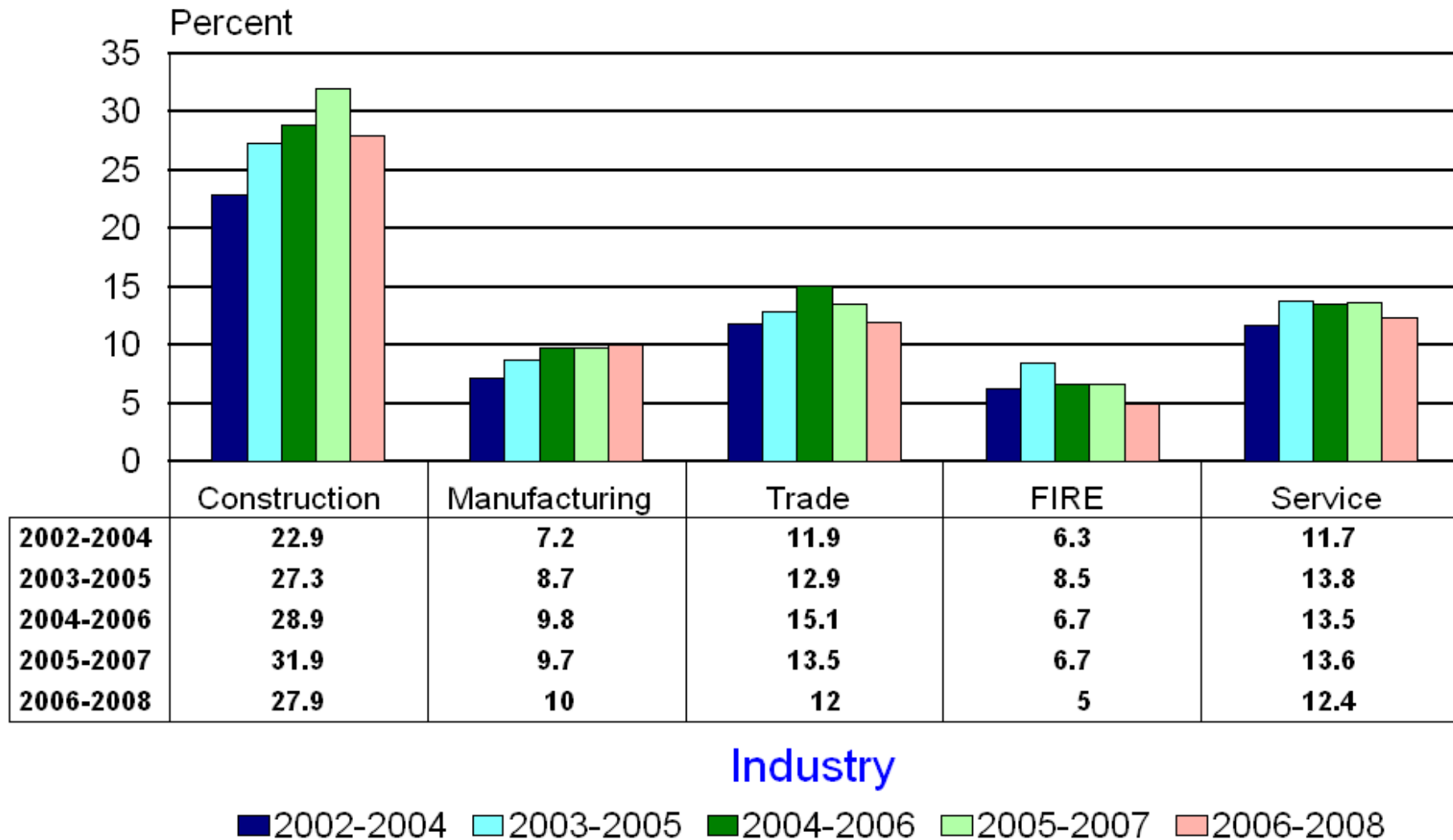
Delaware Non-Agricultural Employment 1939-2008



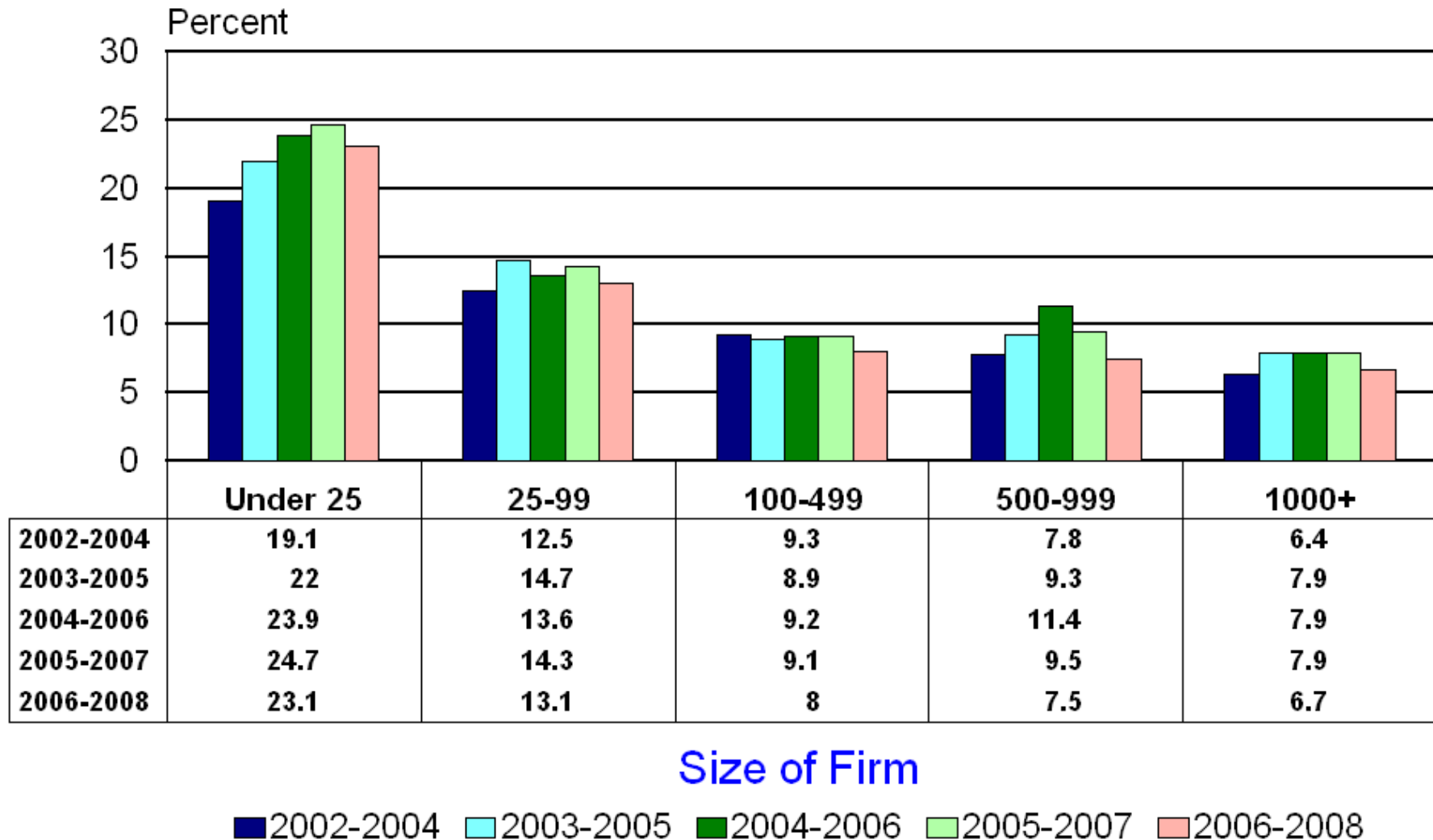
Average Yearly Earnings by Sector, Age, and Education



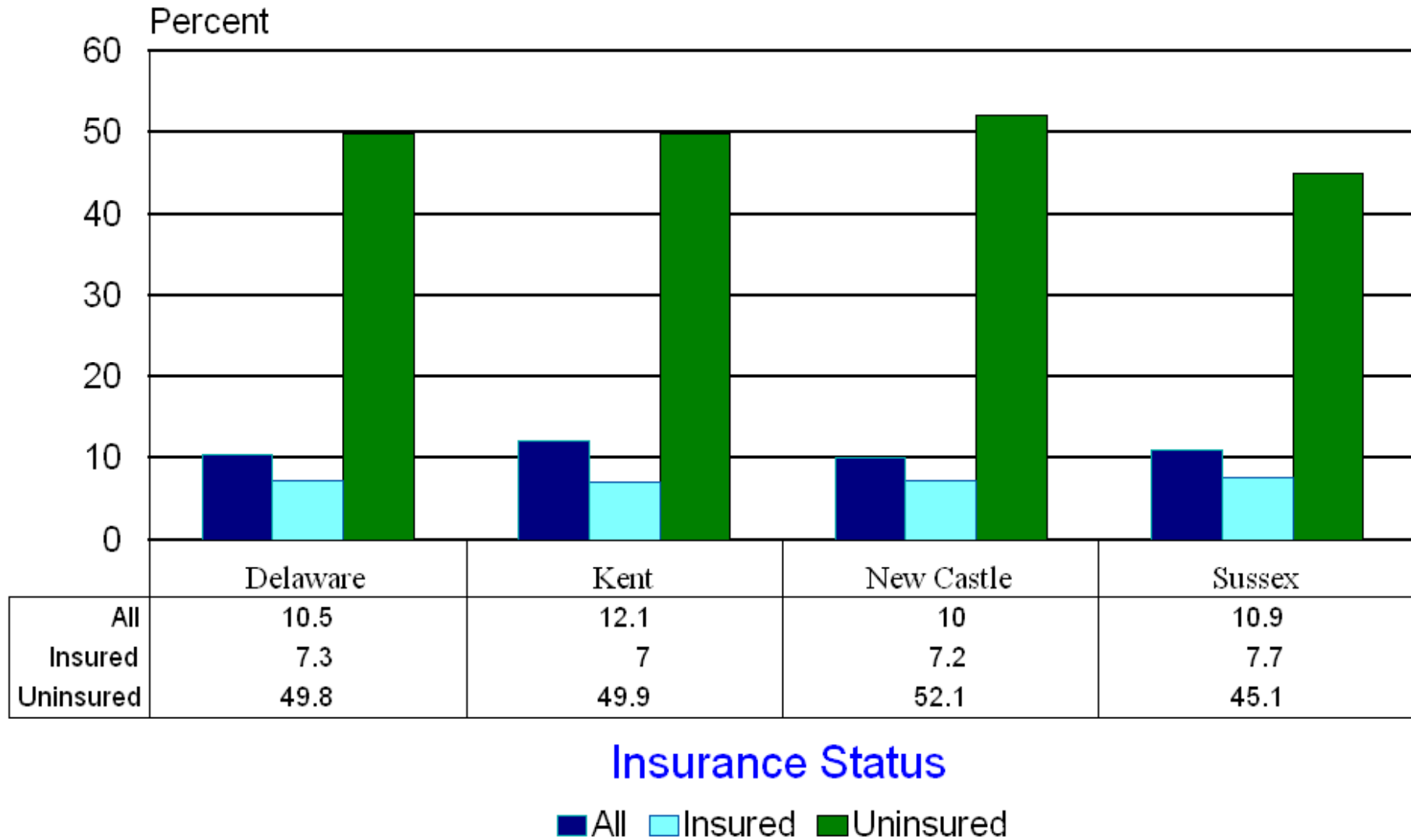
Percent Without Health Insurance by Industry 2001-2008



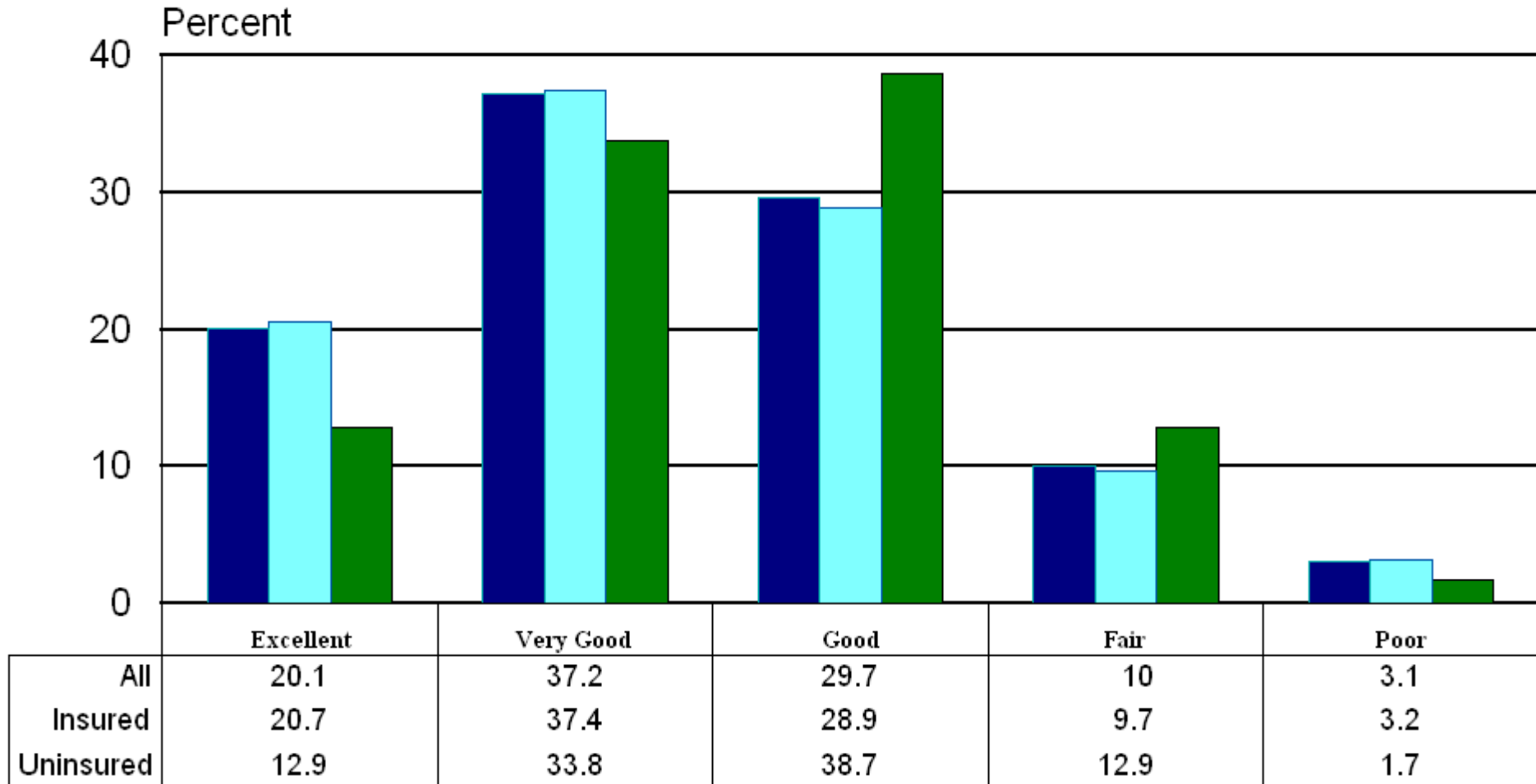
Percent Without Health Insurance by Size of Firm 2001-2008



Needed Doctor but Too Costly in 2007 by County (18-64)



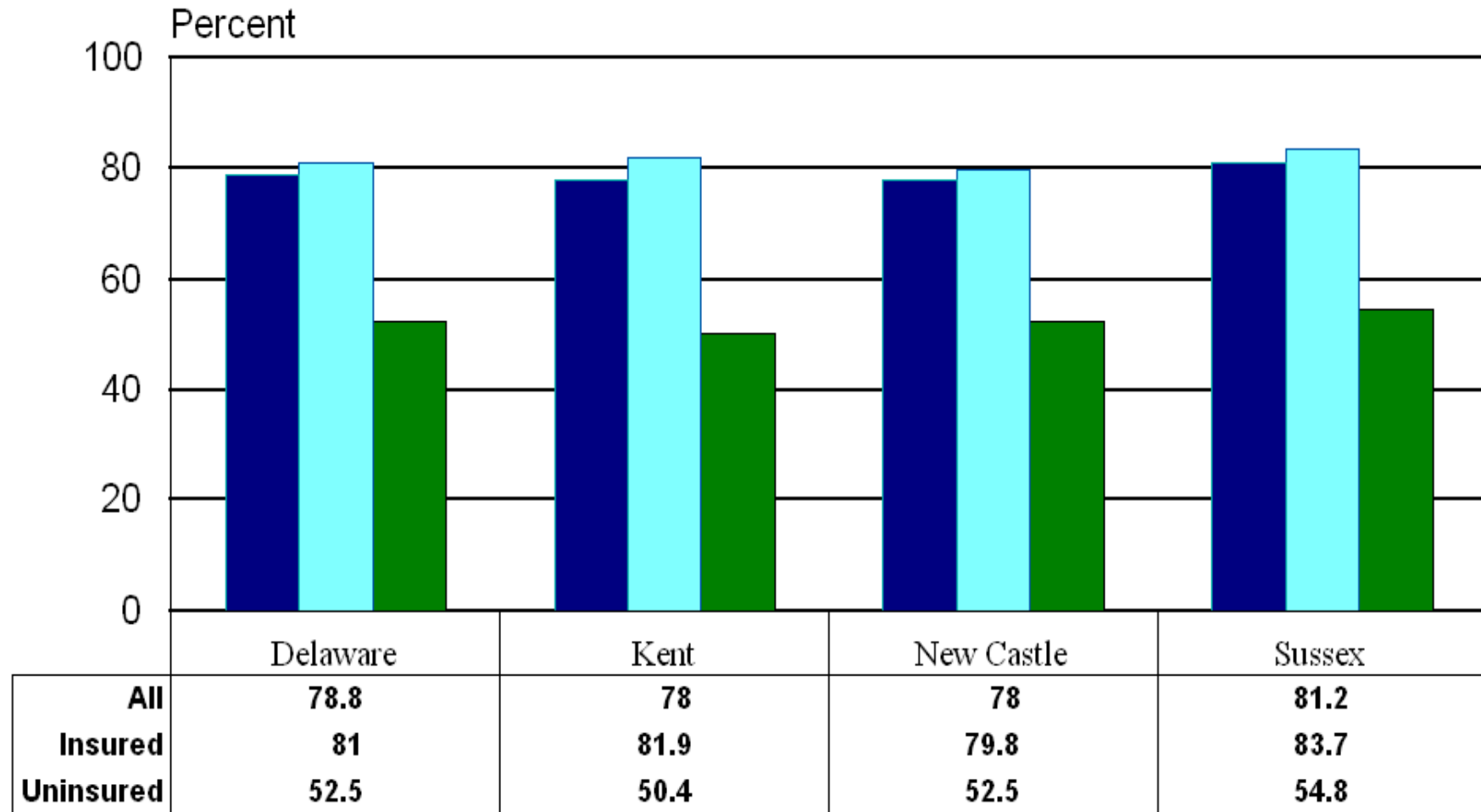
Health Status in 2007 by Insurance Status (18-64)



Insurance Status

■ All ■ Insured ■ Uninsured

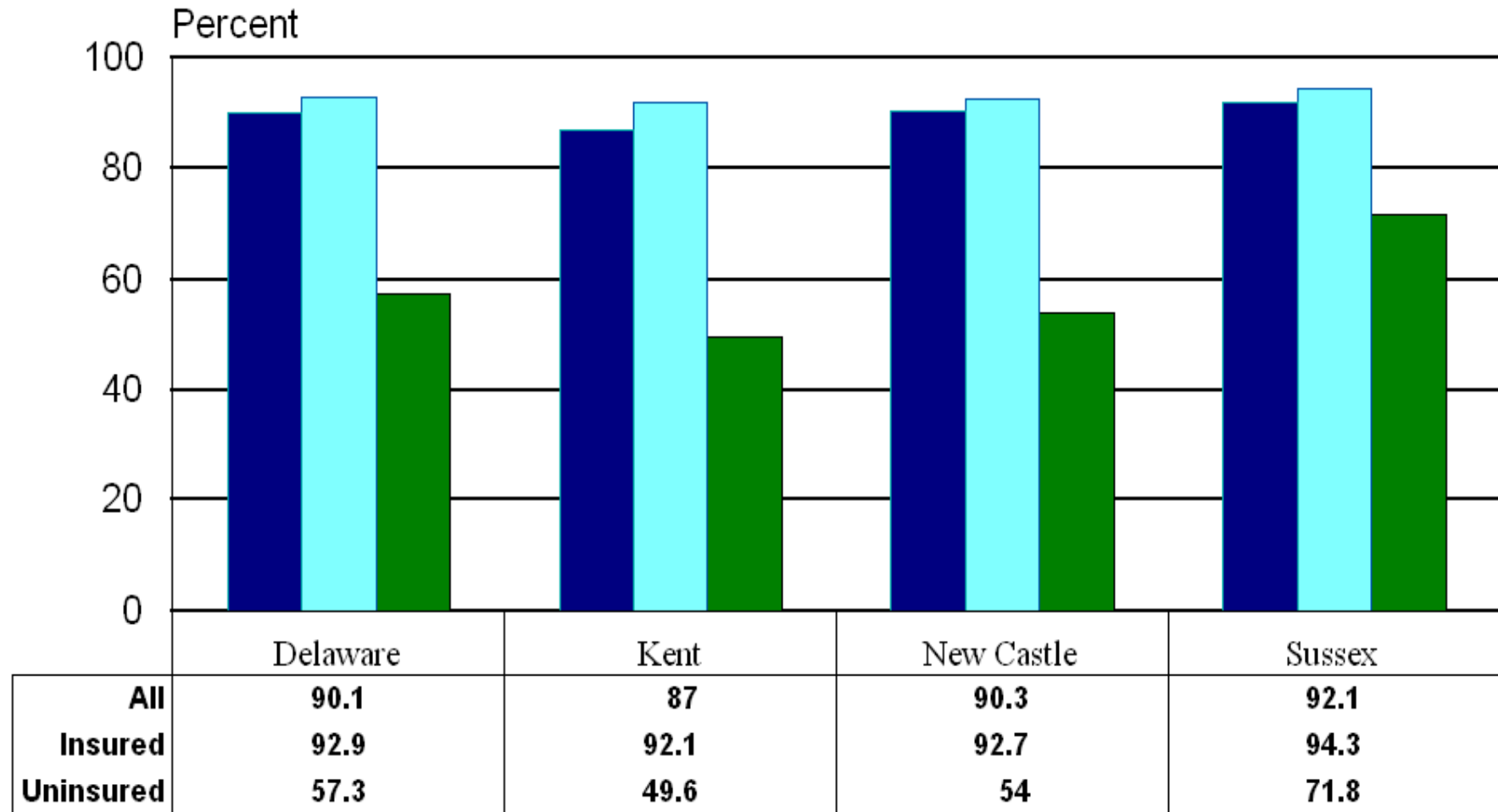
Physical within Last 12 Months in 2007 by County (18-64)



Insurance Status

■ All ■ Insured ■ Uninsured

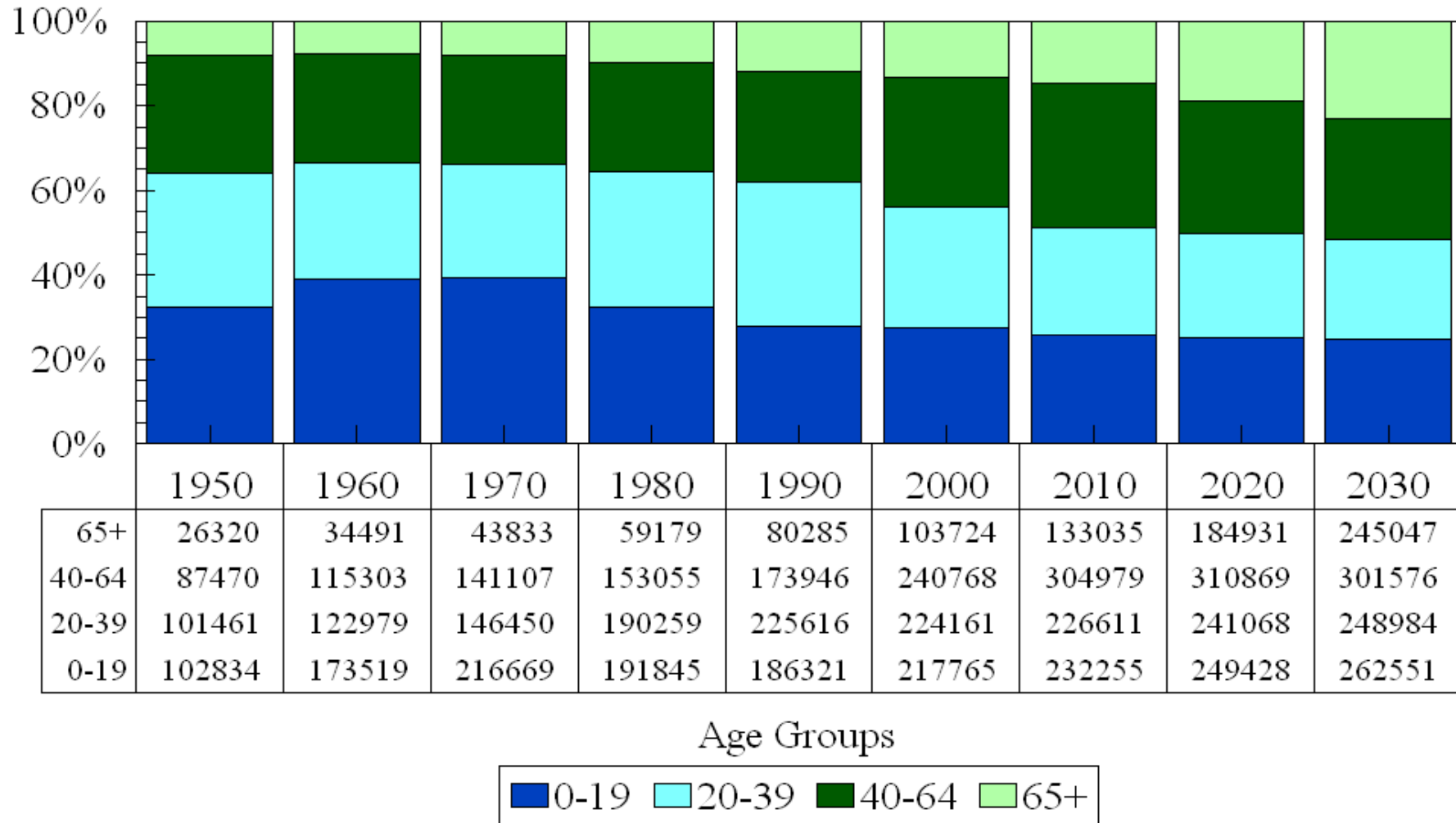
Have a Personal Doctor in 2007 by County (18-64)



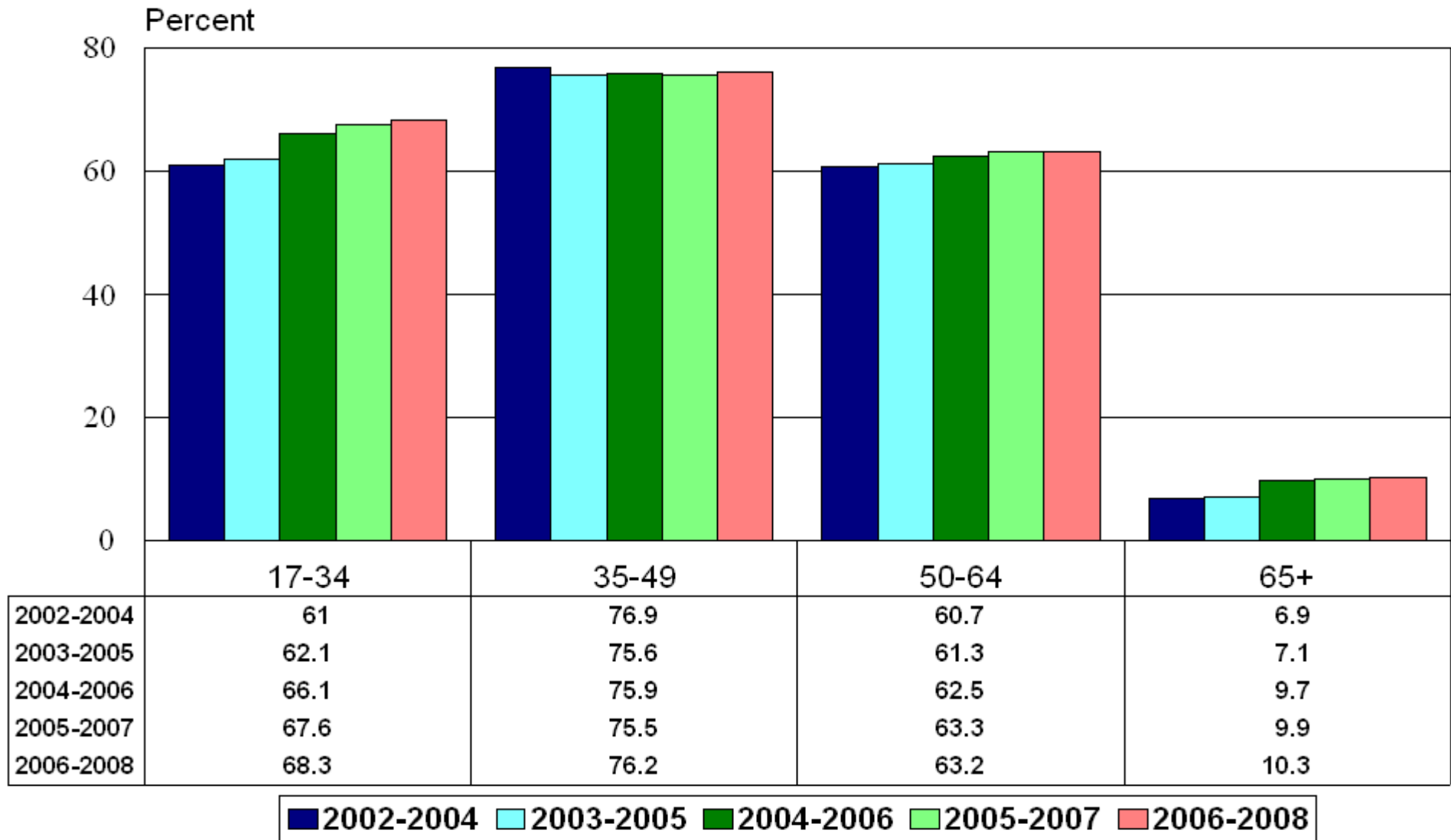
Insurance Status

■ All ■ Insured ■ Uninsured

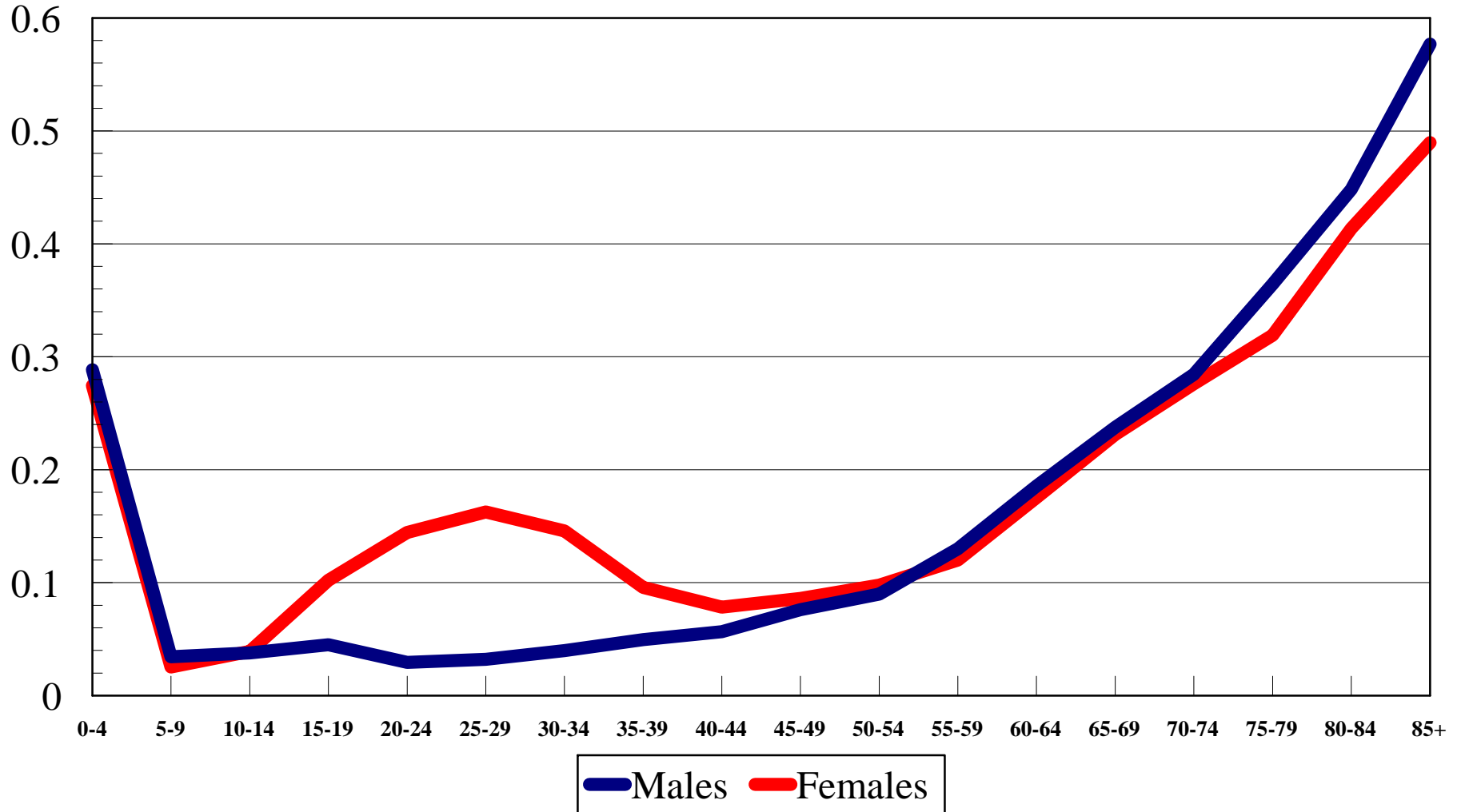
Delaware Age Distribution 1950-2030



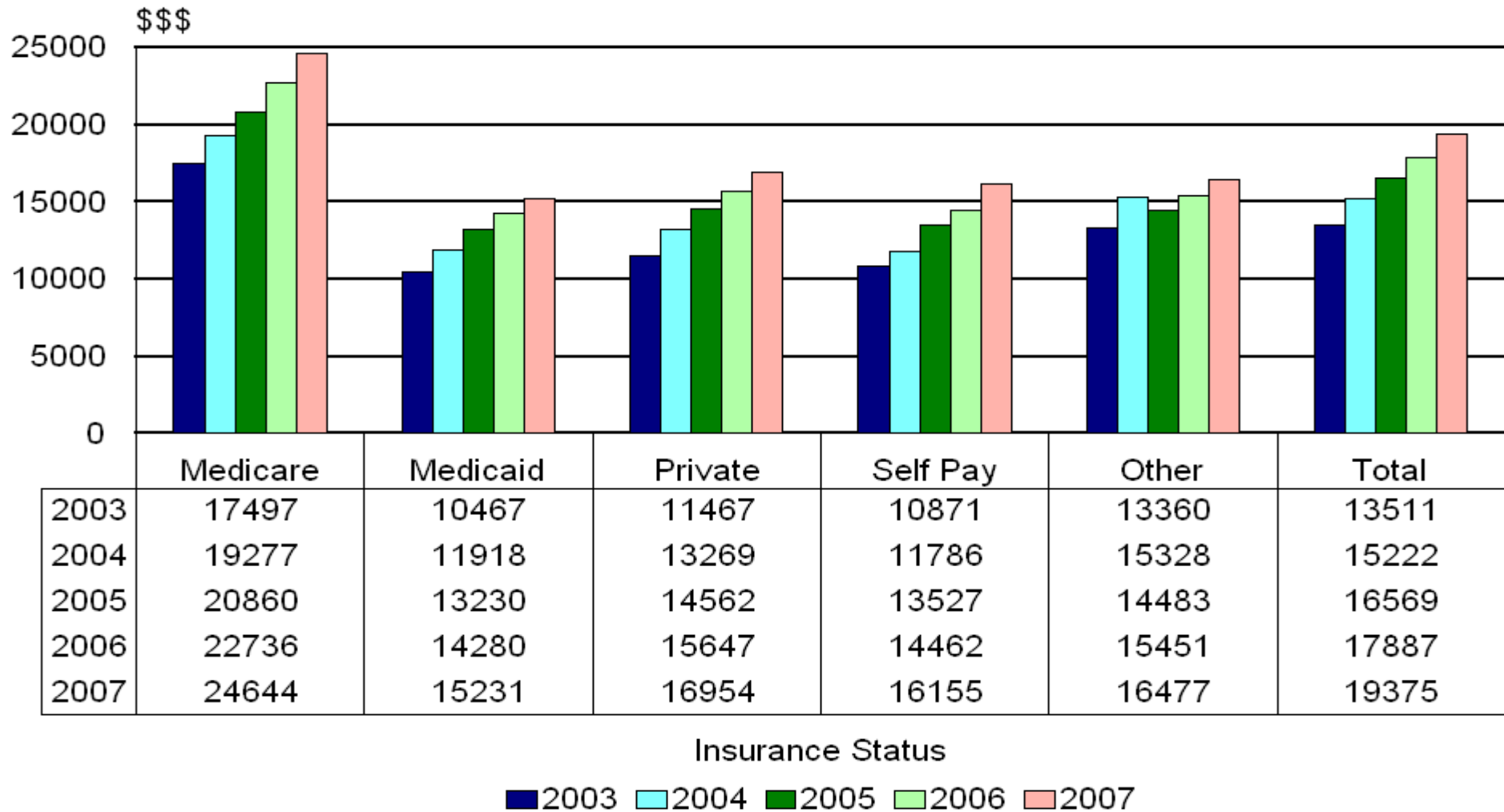
Labor Force Participation Rates by Year and Age Group



Likelihood of Hospitalization by Age and Gender

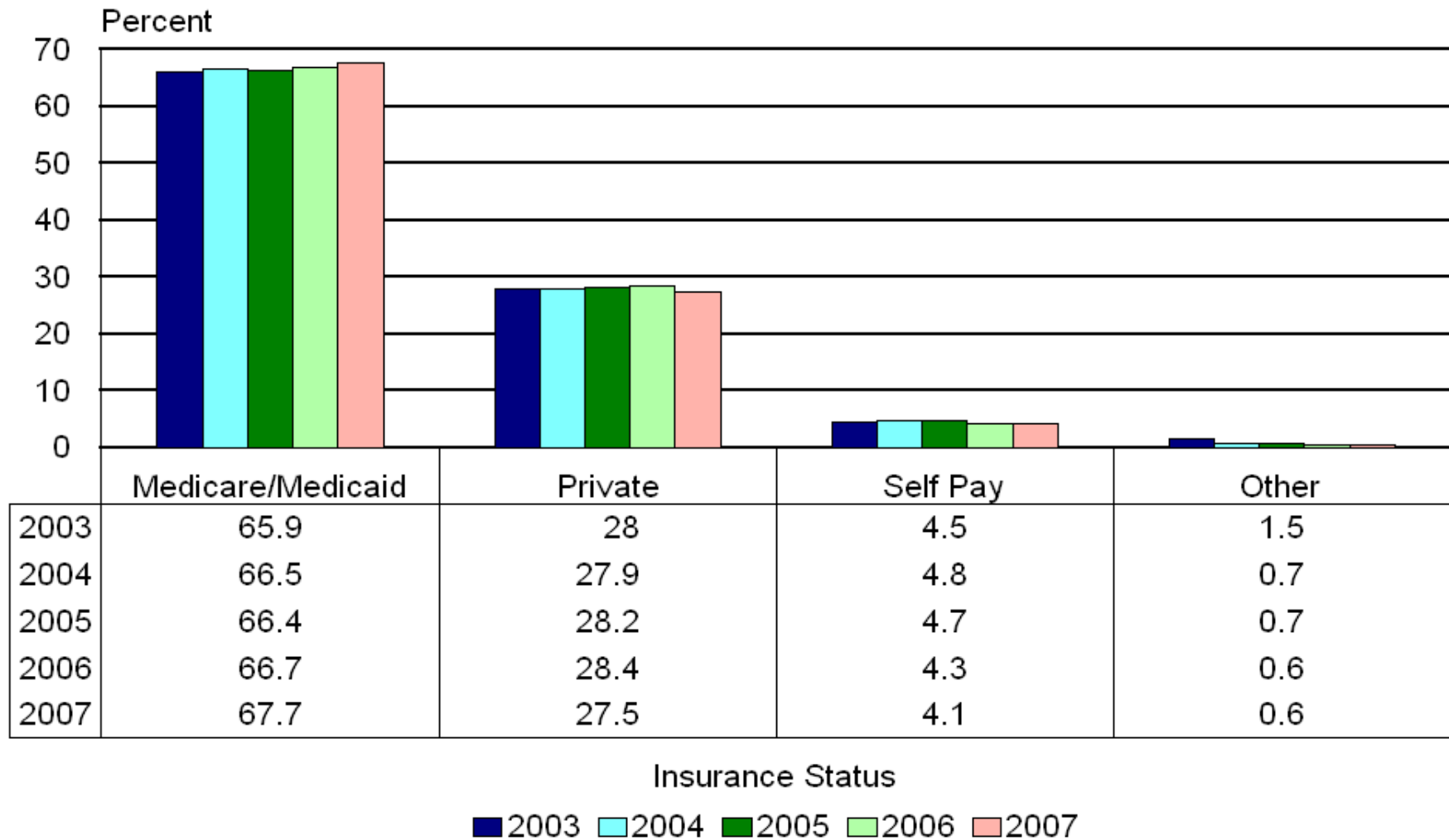


Average Hospital Charges by Type of Coverage



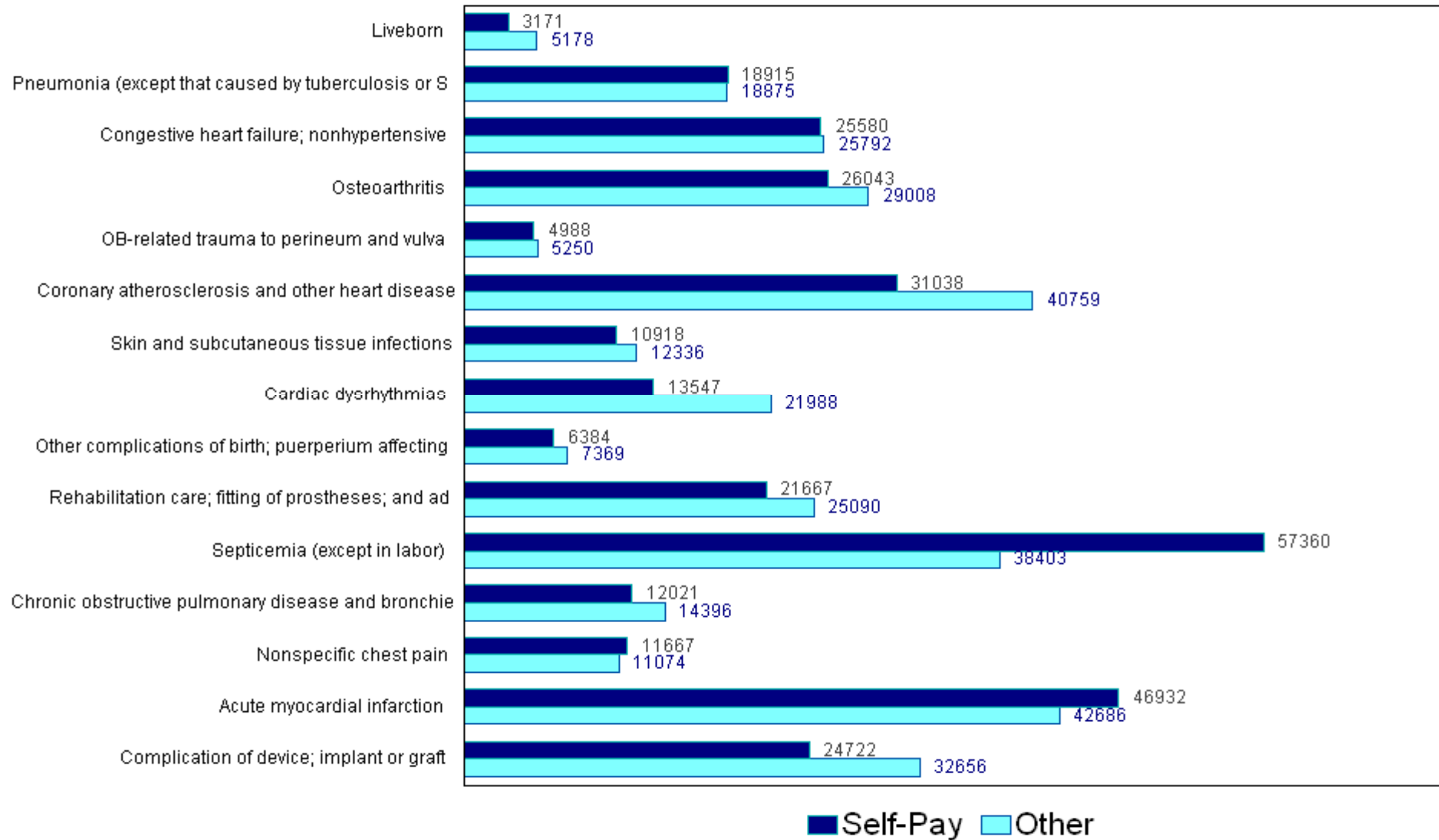
Source : Center for Applied Demography & Survey Research - Delaware Health Statistics Center

Percent of Admissions from Emergency Department by Type of Coverage



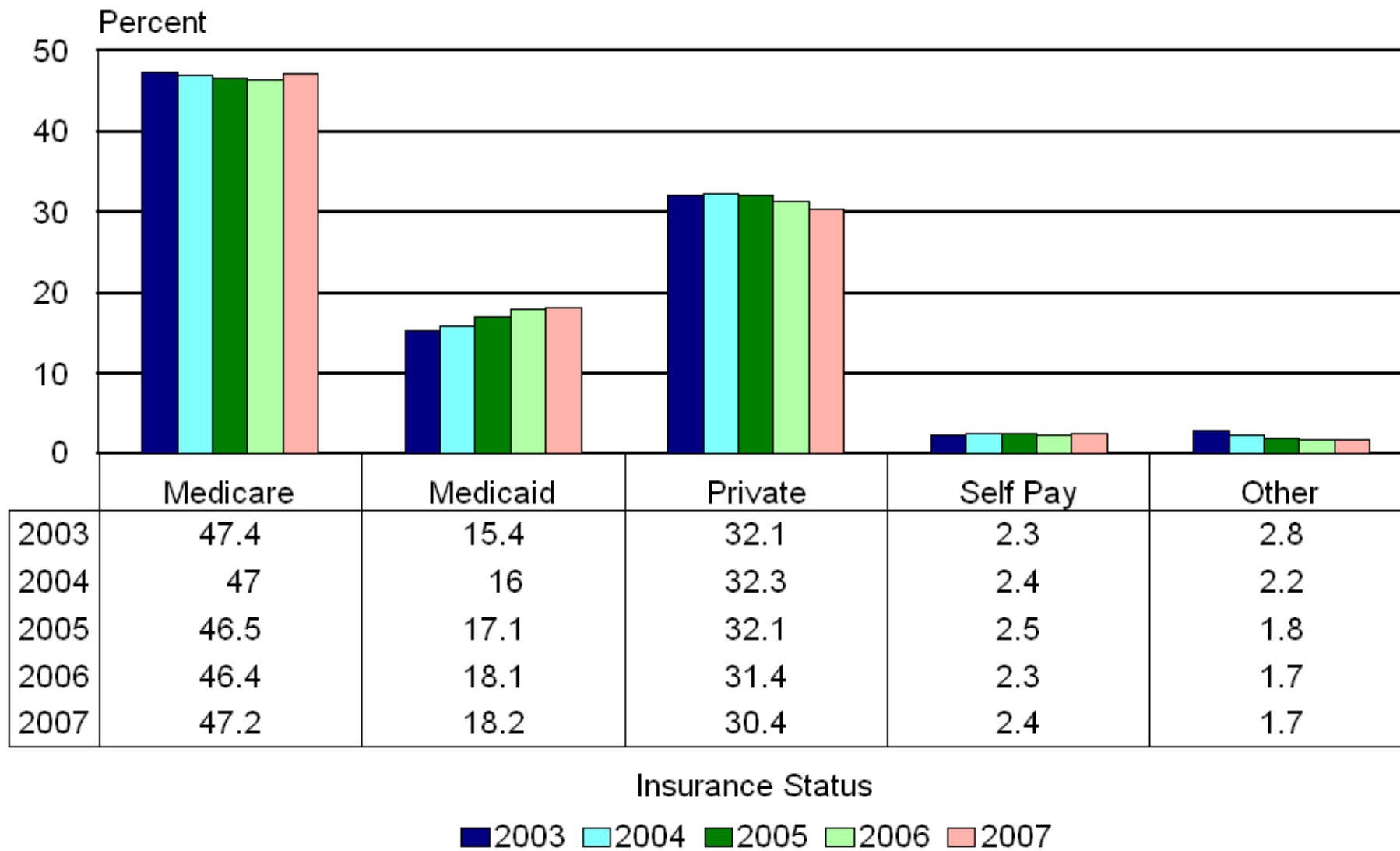
Source : Center for Applied Demography & Survey Research - Delaware Health Statistics Center

Hospital Charges for Most Frequent Diagnoses by Type of Coverage



Source : Center for Applied Demography & Survey Research - Delaware Health Statistics Center

Percent of Hospital Charges by Type of Coverage



Source : Center for Applied Demography & Survey Research - Delaware Health Statistics Center